

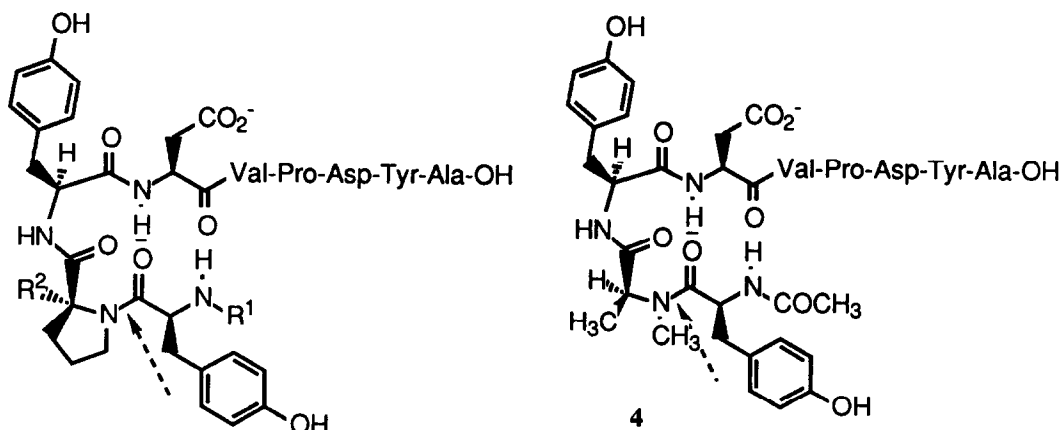
ADDITIONS AND CORRECTIONS

Vol. 40 (1990) 119–123

Probing the role of proline as a recognition element in peptide antigens

Nigel G. J. Richards, Mark G. Hinds, David M. Brennand, Martin J. Glennie, John M. Welsh and John A. Robinson

Page 120, Figure 1 in the original publication was in error, in that it showed the wrong stereochemical configuration of the N-terminal tyrosine. The correct figure is:



1 R¹ = H, R² = H

2 R¹ = COCH₃, R² = H

3 R¹ = COCH₃, R² = CH₃

Fig. 1. Structures of nonapeptides 1–4. Arrowed bond indicates that about which *cis-trans* isomers are observed for peptides 1, 2 and 4.

Subscribers should photocopy these corrections and insert the photocopies in the original article. Authors should introduce these corrections into reprints they distribute. Secondary (abstract) services should carry notice of corrections as prominently as they carry original abstracts.